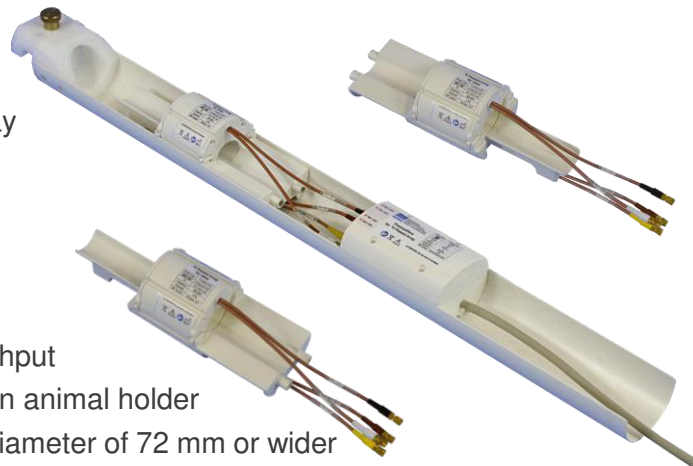


# PRODUCT DATASHEET

## 4 Channel Mouse Thorax Array

### Specifications

- whole thorax coverage by volumetric array
- 4 channels for optimized image quality
- integrated low noise preamplifiers
- split coil housing supports
  - easy animal handling
  - reproducible animal positioning
  - fast animal change for maximum throughput
- can be combined with heated water bed in animal holder
- fits into volume transmit coils with inner diameter of 72 mm or wider
- adaptable to clinical and pre-clinical MR systems



**No Medical Device! Caution** – The use of the devices described above is limited to investigational use on laboratory animals or other tests that do not involve human subjects.

**No Medical Device! Caution** – The use of the devices described above is limited to investigational use on laboratory animals or other tests that do not involve human subjects.

# 4 Channel Mouse Thorax Array

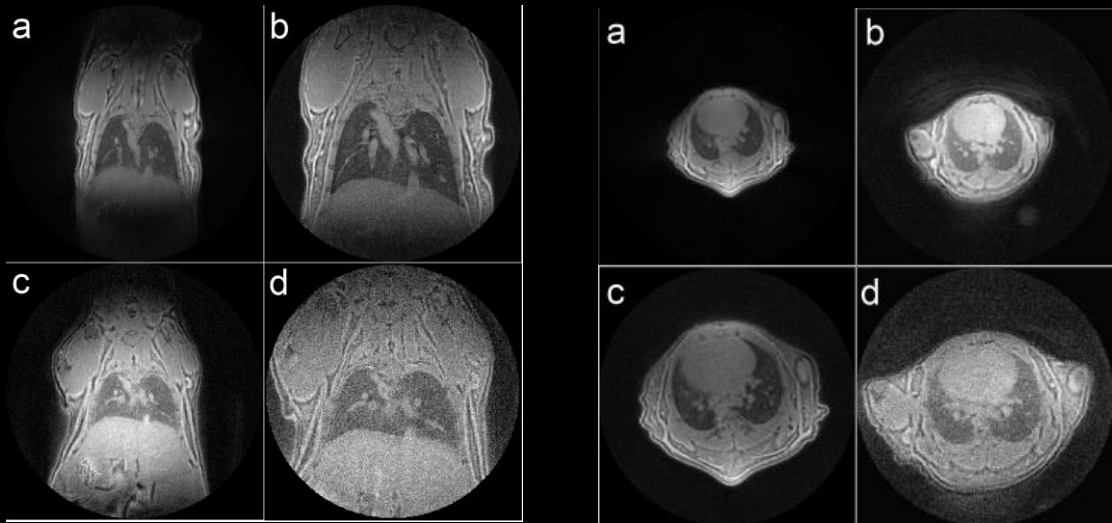


image courtesy:  
Marta Tibiletti, Universität Ulm, Germany

**No Medical Device! Caution** – The use of the devices described above is limited to investigational use on laboratory animals or other tests that do not involve human subjects.