

# PRODUCT DATASHEET

## 8 Channel Mouse Volume Array

### Specifications

- 8 channel mouse whole body array
- 2 x 4 coil elements
- receive only, actively decoupled
- integrated preamplifiers
- covering a FoV of 8 cm length
- supports parallel imaging methods such as SENSE or GRAPPA
- volume transmit with body coil
- animal support with integrated anaesthesia mask and bite bar included
- for 1.5T and 3T MR systems
- housing dimensions: ID 35 mm, OD 119 mm, array length 80 mm
- individually adaptable to different MR systems

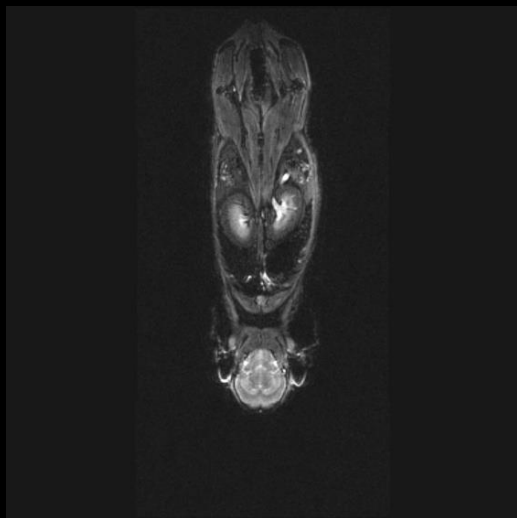
**No Medical Device! Caution** – The use of the devices described above is limited to investigational use on laboratory animals or other tests that do not involve human subjects.



Regulatory requirements for medical devices will vary by country and MR system.

Please, contact us at [info@rapidbiomed.de](mailto:info@rapidbiomed.de) or [info@rapidmri.com](mailto:info@rapidmri.com) (USA, Canada, and South America) to determine approval status for products mentioned on this product sheet.

## 8 Channel Mouse Volume Array



Whole body mouse at 3T

**No Medical Device! Caution** – The use of the devices described above is limited to investigational use on laboratory animals or other tests that do not involve human subjects.

Regulatory requirements for medical devices will vary by country and MR system.

Please, contact us at [info@rapidbiomed.de](mailto:info@rapidbiomed.de) or [info@rapidmri.com](mailto:info@rapidmri.com) (USA, Canada, and South America) to determine approval status for products mentioned on this product sheet.