

PRODUCT DATASHEET

16 Channel Wrist Array 7 T

Specifications

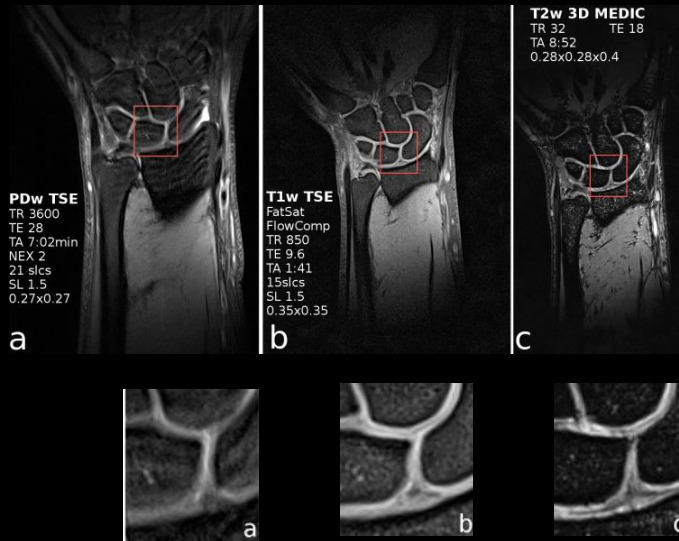
- high resolution wrist imaging
- quadrature transmit (birdcage), ID 17 cm
- 16 receive channels, length 8 cm (other on demand)
- shape follows hand anatomy
- for 7 T MR systems
- head rest for ‚Superman‘-positioning
- slide frame supporting left and right wrist
- approx. weight: 9 kg
- no medical device



Regulatory requirements for medical devices will vary by country and MR system.

Please, contact us at info@rapidbiomed.de or info@rapidmri.com (USA, Canada, and South America) to determine approval status for products mentioned on this product sheet.

16 Channel Wrist Array 7 T



High resolution images of the wrist anatomy and cartilage of a healthy volunteer

image courtesy: Stefan Alt, DKFZ Heidelberg, Germany

Regulatory requirements for medical devices will vary by country and MR system. Please, contact us at info@rapidbiomed.de or info@rapidmri.com (USA, Canada, and South America) to determine approval status for products mentioned on this product sheet.