

# PRODUCT DATASHEET

## 7T Cervical Spine Array

### Specifications

- phased array for cervical spine application
- 8 independent Tx/Rx channels
- sensitive area C1-C7
- single transmit (through adaptor) and pTx
- B0-field strength 7T
- anatomically shaped coil housing
- approx. housing dimensions: 52 x 49 x 17 cm<sup>3</sup> (l/w/h)
- approx. weight: 8 kg (without adaptor)
- individual interfacing to different MR systems
- no medical device

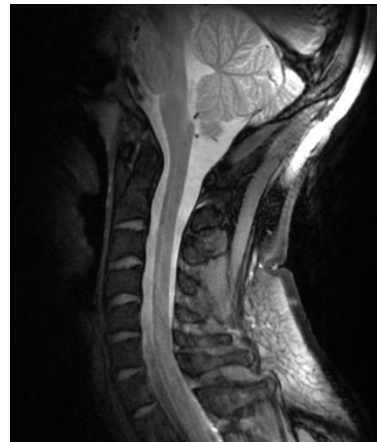


image  
courtesy: A.  
Massire, V.  
Callot  
CRMBM-  
CEMEREM,  
Marseille,  
France



Regulatory requirements for medical devices will vary by country and MR system.

Please, contact us at [info@rapidbiomed.de](mailto:info@rapidbiomed.de) or [info@rapidmri.com](mailto:info@rapidmri.com) (USA, Canada, and South America) to determine approval status for products mentioned on this product sheet.