

## Dual Tuned Head Coil for PET/MR

### MR Coils Made-to-Measure

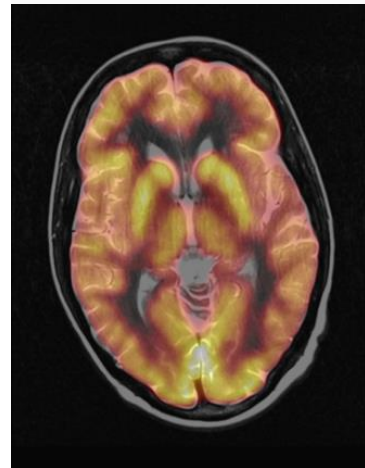


Image Courtesy: C. J. McGinnity, King's College London, London, UK in Proc. ISMRM 2016;  
Prof. Dr. H. H. Quick, University Hospital Essen, Germany;

Transverse slice of the PET image and overlay on the T2 TSE anatomical image

## Specifications

- transmit / receive quadrature polarization for both nuclei
- available for  $^{31}\text{P}$ ,  $^{23}\text{Na}$  and  $^{13}\text{C}$  combined with  $^1\text{H}$  (other non-proton nuclei on demand)
- supports  $^1\text{H}$  decoupling experiments
- optimized for PET/MR
- $B_0$ -field strength 3 T
- sliding mounting mechanism for patient access
- approx. housing dimensions: inner diameter 26.5 cm / outer diameter 35 cm
- approx. weight: 8 kg
- individually adaptable to different MR systems

Regulatory requirements for medical devices will vary by country and MR system.

Please, contact us at [info@rapidbiomed.de](mailto:info@rapidbiomed.de) or [info@rapidmri.com](mailto:info@rapidmri.com) (USA, Canada, and South America) to determine approval status for products mentioned on this product sheet.