

7 T Multi-Channel Dual Tuned Head Coil

MR Coils Made-to-Measure

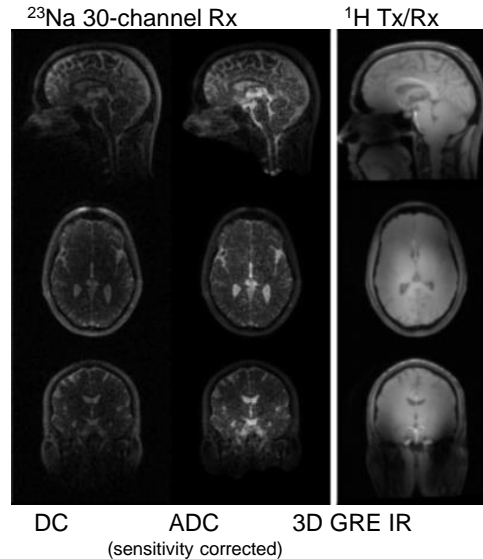


Image Courtesy:
J.M. Lommen, DKFZ Heidelberg, Germany

The in-vivo example shows: ^{23}Na MRI data from 30-channel array data reconstructed using ADC (1st column) and B_1^- corrected ADC (2nd column). Anatomical details become clearly visible. The ^1H data displays good field homogeneity (3rd column).

Specifications

- combined dual tuned volume resonator and 30-channel non-proton Rx-array for human head applications
- transmit / receive quadrature polarization for dual tuned volume resonator
- 30 channel non-proton Rx-array for increased SNR performance
- open design for fMRI studies
- B_0 -field strength 7T
- sliding mounting mechanism for patient access
- other nuclei combinations on demand
- approx. housing dimensions:
 - dual tuned volume resonator OD 36.5 cm
 - 30 channel non-proton Rx-array: ID 20 cm x 22 cm (oval)
- approx. weight: 12.5 kg
- individually adaptable to different MR systems
- no medical device

Caution! Investigational device limited by Federal (or United States) Law to investigational use only.

Important Note: For Siemens Terra MR systems a 32-channel version of this product is available exclusively through SIEMENS Healthcare.