

7 T 8-Channel Cervical Spine Array

MR Coils Made-to-Measure

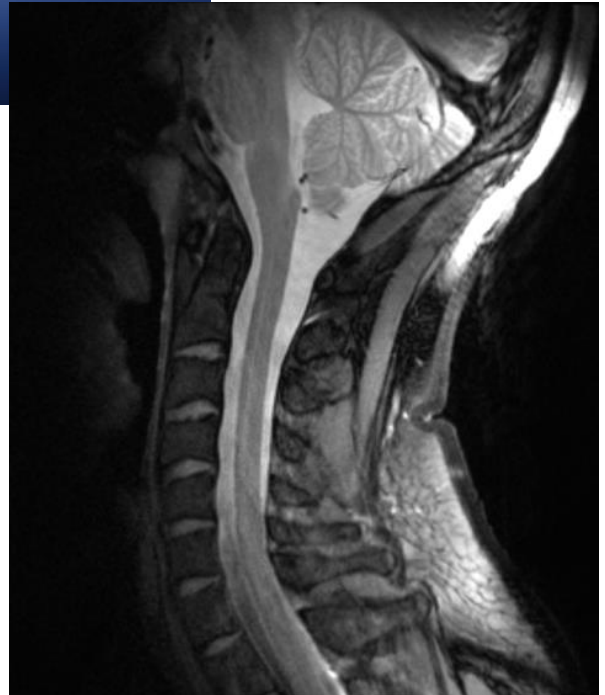


Image courtesy: A. Massire, V. Callot
CRMBM-CEMEREM, Marseille, France

Specifications

- phased array for cervical spine application
- 8 independent channels
- sensitive area C1-C7
- transmit SENSE capable
- B_0 -field strength 7T
- anatomically shaped coil housing
- approx. housing dimensions: 52 x 49 x 17 cm (l/w/h)
- approx. weight: 8 kg (without interface)
- individually adaptable to different MR systems
- no medical device

Caution! Investigational device limited by Federal (or United States) Law to investigational use only.