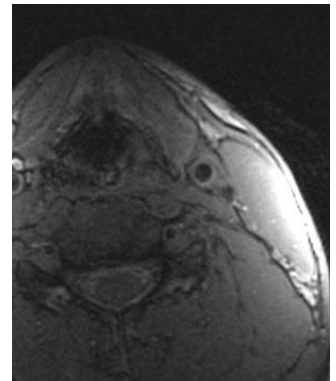
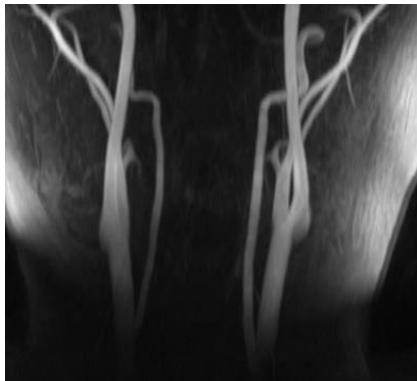
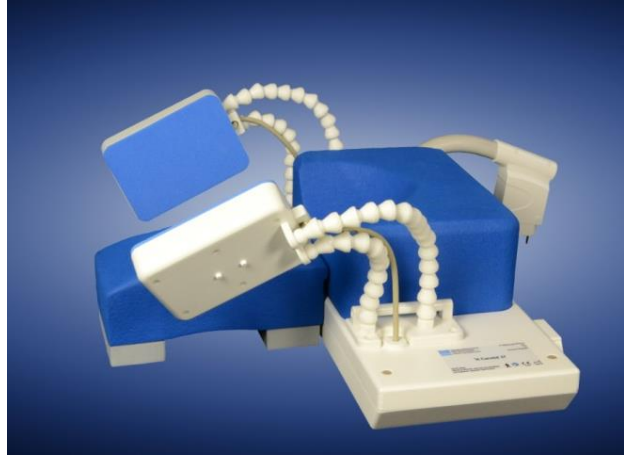


## 6 Channel PET/MR Carotid Array

### MR Coils Made-to-Measure



### Specifications

- array for carotid imaging
- 6 receive channels
- supports parallel imaging techniques with PAT factors up to 4
- MR image quality for accurate lumen detection
- PET compatible
- B<sub>0</sub>-field strength 3 T
- ergonomically formed coil housing and cushions
- housing dimensions: approx. 37 x 49 x 14 cm
- approx. weight: 2 kg
- individually adaptable to different PET/MR systems

Images Courtesy: M. Kusch, S. Nekolla  
NUK Klinikum Rechts der Isar, TU München

Images are acquired with a Siemens 3 T Biograph mMR.

Regulatory requirements for medical products will vary by country and MR system.

Please contact us at [info@rapidbiomed.de](mailto:info@rapidbiomed.de) or [info@rapidmri.com](mailto:info@rapidmri.com) (USA, Canada, and South America) to determine approval status for products mentioned on this product sheet.