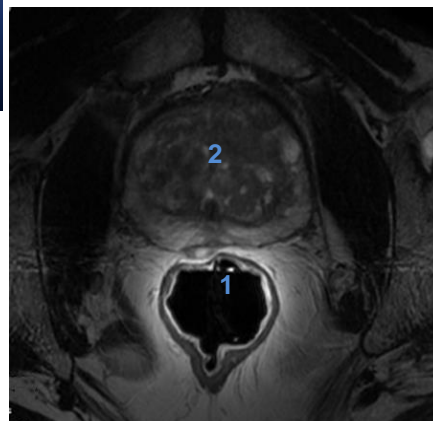
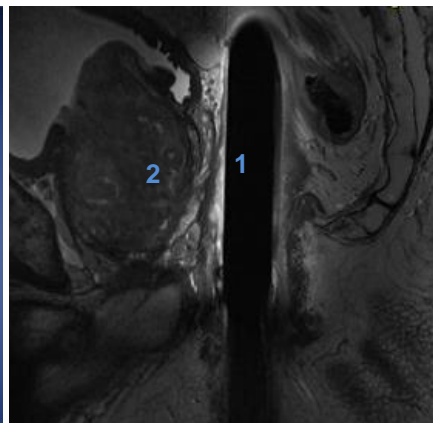
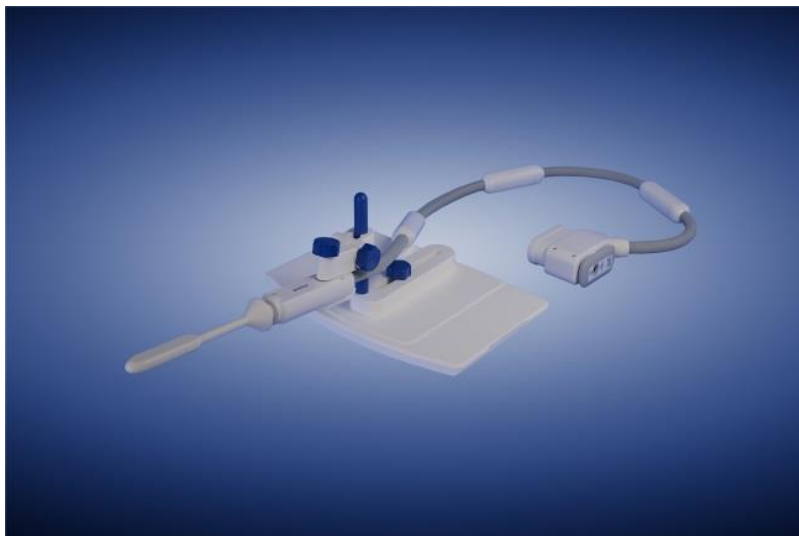


## $^1\text{H}$ Endorectal Coil

### MR Coils Made-to-Measure



*T2 in vivo images in sagittal (left) and transversal orientation (right) showing a well-positioned Endorectal Coil with a centered prostate gland (2) and the flat top (1) facing towards the prostate*

## Specifications

- MR coil for examination of the prostate
- $^1\text{H}$  receive-only, single loop
- use of  $^1\text{H}$  body coil allowed
- $B_0$ -field strength 1.5 T and 3 T
- sealed coil head
- minimum sized and drop-shaped housing
- housing dimensions: 9.7 x 2.5 x 1.7 cm (coil head)
- approx. weight: 1 kg (coil only) / 2 kg (holder)
- individually adaptable to different MR systems\*

Regulatory requirements for medical products will vary by country and MR system.

Please, contact us at [info@rapidbiomed.de](mailto:info@rapidbiomed.de) or [info@rapidmri.com](mailto:info@rapidmri.com) (USA, Canada, and South America) to determine approval status for products mentioned on this product sheet.

### \* Important Note:

For GE 1.5 T and 3 T MR systems this product is exclusively available through GE Healthcare. Please contact us regarding the availability on your MR system.