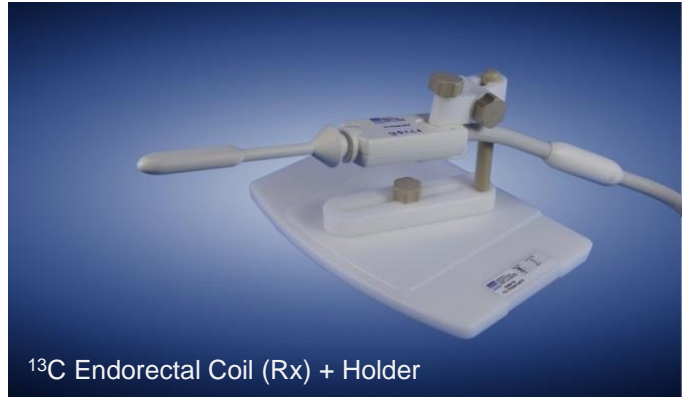


¹³C Endorectal Coil *

MR Coils Made-to-Measure

¹³C metabolic MR imaging is getting more and more exciting, especially since this technique is beginning to be explored in human applications. Dedicated RF coils play an important role in this context. Tx coils should pose high Tx efficiency for short RF pulses whereas an optimized SNR is needed during signal reception. Additionally, ¹H overview imaging or shimming needs to be available. Last but not least, high requirements in safety and workflow are set due to application in humans.

- dual-tuned ¹³C / ¹H
- receive-only
- sealed coil head with soft coating
- integrated ¹³C Urea calibration phantom
- easy coil positioning
- use of ¹H body coil allowed
- dedicated ¹³C transmit coil required



Please contact us for availability on your MR system.

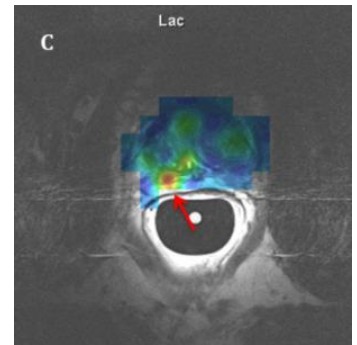
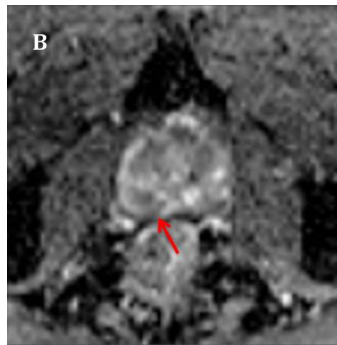
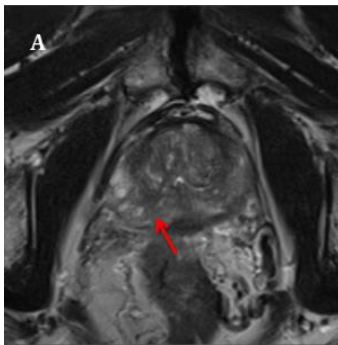


Image Courtesy: Fiona Gong, University College London, U.K.

T2 weighted image (A) and diffusion MR image (B) from routine multi-parametric MRI demonstrating a focal tumour (arrow) confirmed at biopsy as Gleason 3+4; more visible on hyperpolarised MRI study as increased ¹³-C lactate signal (arrow)

Specifications

* Regulatory requirements for medical products will vary by country and MR system. Please contact us at info@rapidbiomed.de or info@rapidmri.com (USA, Canada, and South America) to determine approval status for products mentioned on this product sheet.

B_0 -field strength	3 T
housing dimensions	9.7 x 3.1 x 2.2 cm (coil head) / Ø 1.2 cm (coil neck)
weight	ca. 1.2 kg (coil only) / ca. 3.5 kg (holder)