

## Dual Tuned Flex Surface Coil \*

MR Coils Made-to-Measure



- multi-purpose application, whole body, head excluded
- available for  $^{23}\text{Na}/^1\text{H}$ ,  $^{31}\text{P}/^1\text{H}$ ,  $^{13}\text{C}/^1\text{H}$ , and  $^{19}\text{F}/^1\text{H}$
- transmit / receive linear polarization for both nuclei
- flexible coil housing
- adapts to body shape with maximum patient comfort
- application shown is  $^{23}\text{Na}$  on the C-spine @ 7 T

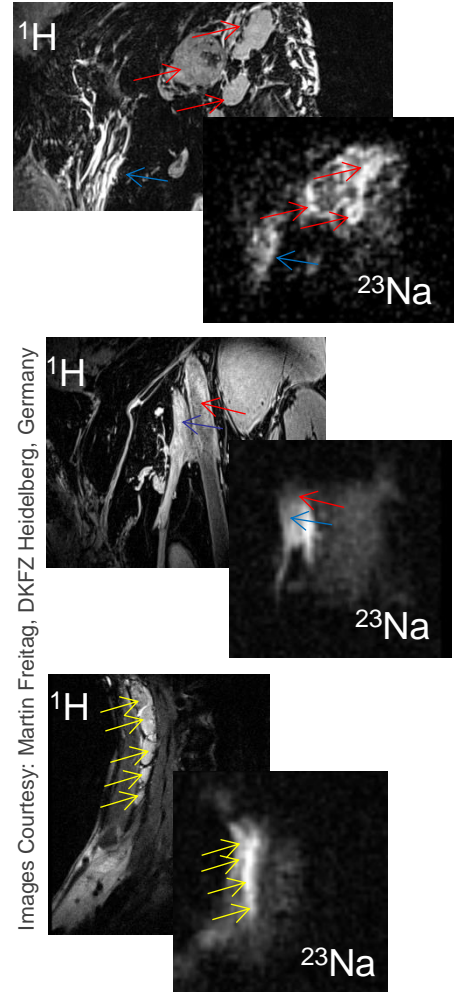
**Important Note:** For a Siemens Terra MR system the  $^{23}\text{Na}/^1\text{H}$ ,  $^{31}\text{P}/^1\text{H}$ ,  $^{13}\text{C}/^1\text{H}$ , and  $^{19}\text{F}/^1\text{H}$  versions of this product are exclusively available through SIEMENS Healthcare.

Please contact us for availability on your MR system.

### Specifications

|                       |                                      |
|-----------------------|--------------------------------------|
| $B_0$ -field strength | 1.5 - 7 T                            |
| housing dimensions    | 14 x 15 cm without housing and cable |
| weight                | ca. 1 kg without housing and cable   |

\* Regulatory requirements for medical products will vary by country and MR system. Please contact us at [info@rapidbiomed.de](mailto:info@rapidbiomed.de) or [info@rapidmri.com](mailto:info@rapidmri.com) (USA, Canada, and South America) to determine approval status for products mentioned on this product sheet.



Images Courtesy: Martin Freitag, DKFZ Heidelberg, Germany