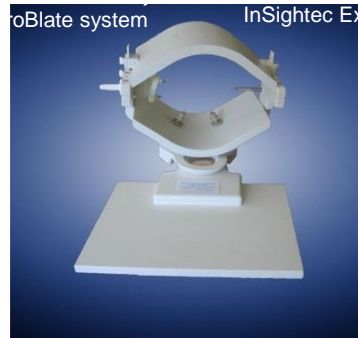
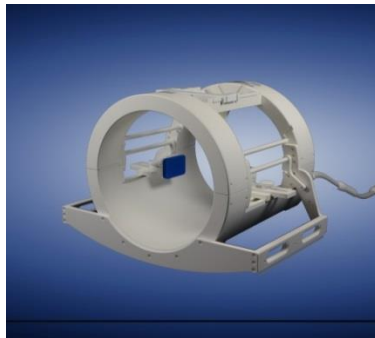
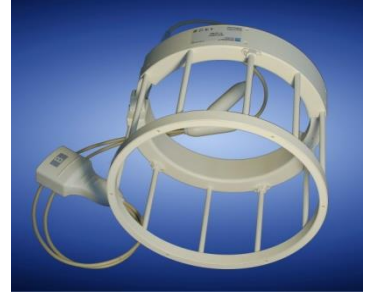


Selection of Specialized Head Coils Supporting Interventional and Stimulated Studies *

MR Coils Made-to-Measure

Interventional MRI has become an important tool to guide minimally-invasive procedures. RAPID Biomedical has supported this development with a variety of coil designs for interventional and stimulated studies. Above you find a collection of these designs. Some of these coils are available as a package with the interventional device through our collaborating partners. Others can be ordered at RAPID Biomedical directly.



- multi channel arrays for human head imaging
- open access for interventional or stimulating devices
- 5 - 8 receive channels
- coil designs maintaining optimum SNR
- supports parallel imaging techniques
- individually adaptable to established MR systems

Specifications

* Regulatory requirements for medical products will vary by country and MR system. Please contact us at info@rapidbiomed.de or info@rapidmri.com (USA, Canada, and South America) to determine approval status for products mentioned on this product sheet.

B_0 -field strength	1.5 to 3 T
housing dimensions	depend on housing
weight	depends on housing