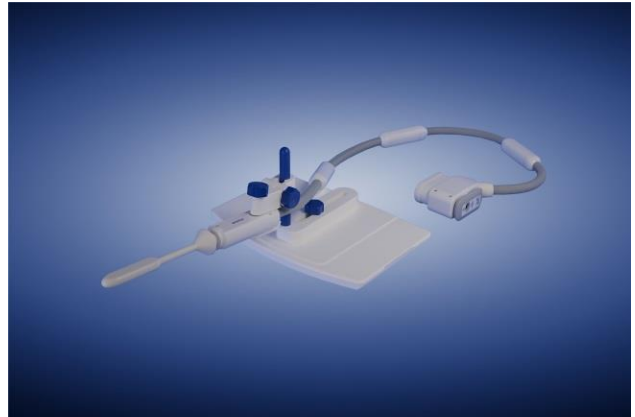


## <sup>1</sup>H Endorectal Coil \*

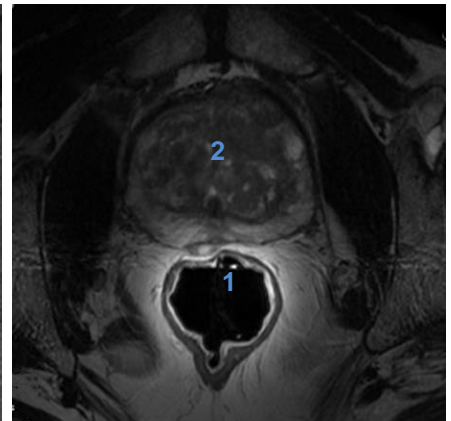
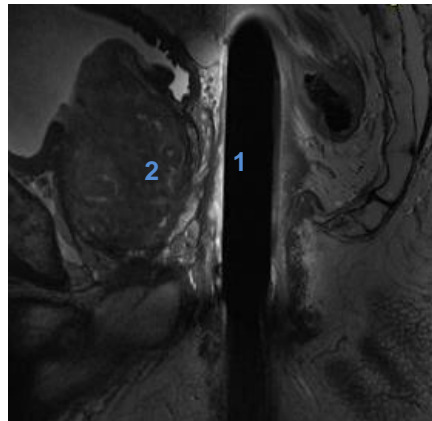
### MR Coils Made-to-Measure

This endorectal coil is indicated for use as diagnostic device extension for MR systems to produce transverse, sagittal, coronal and oblique images, spectroscopic images and/or spectra, displaying the internal structure of the prostate. These images when interpreted by a trained physician, yield information that may assist in diagnosis.

- MR coil for examination of the prostate
- <sup>1</sup>H receive-only, single loop
- sealed coil head with soft coating
- minimum sized and drop-shaped housing for patient comfort
- easy coil positioning
- use of <sup>1</sup>H body coil allowed



*T2 in vivo images in sagittal (left) and transversal orientation (right) showing a well-positioned Endorectal Coil with a centered prostate gland (2) and the flat top (1) facing towards the prostate*



#### Important Note:

For a GE 1.5 T and 3 T MR systems this product is exclusively available through GE Healthcare.

Please contact us for availability on your MR system.

### Specifications

$B_0$ -field strength	1.5 T and 3 T
housing dimensions	9.7 x 2.5 x 1.7 cm (coil head)
weight	ca. 1 kg (coil only) / ca. 2 kg (holder)

\* Regulatory requirements for medical products will vary by country and MR system. Please contact us at [info@rapidbiomed.de](mailto:info@rapidbiomed.de) or [info@rapidmri.com](mailto:info@rapidmri.com) (USA, Canada, and South America) to determine approval status for products mentioned on this product sheet.