

7 T 8-Channel Cervical Spine Array *

MR Coils Made-to-Measure

In the recent years 7 T MRI systems have enabled a new class of human applications. The Cervical Spine array makes use of the increased SNR and supports ultra high resolution of the vertebrae.

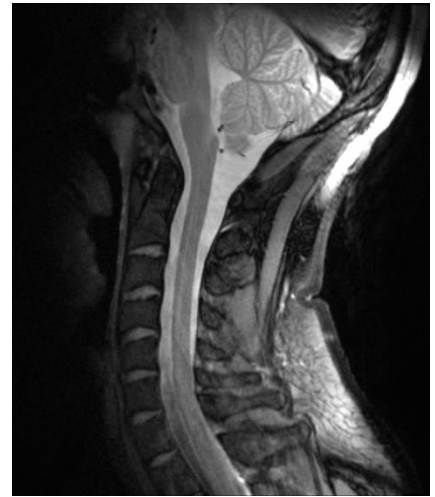


Image courtesy: A. Massire, V. Callot
CRMBM-CEMEREM, Marseille, France

- array for cervical spine application
- 8 independent channels for extended sensitive area (C1-C7)
- transmit SENSE capable
- anatomically shaped coil housing
- individually adaptable to most established 7 T human MR systems with one or more individual transmitters for parallel transmit applications

Specifications

* Regulatory requirements for medical products will vary by country and MR system. Please contact us at info@rapidbiomed.de or info@rapidmri.com (USA, Canada, and South America) to determine approval status for products mentioned on this product sheet.

B_0 -field strength	7 T
housing dimensions	23.3 x 21.6 x 12.9 cm (l/w/h)
weight	1.7 kg (without interface)