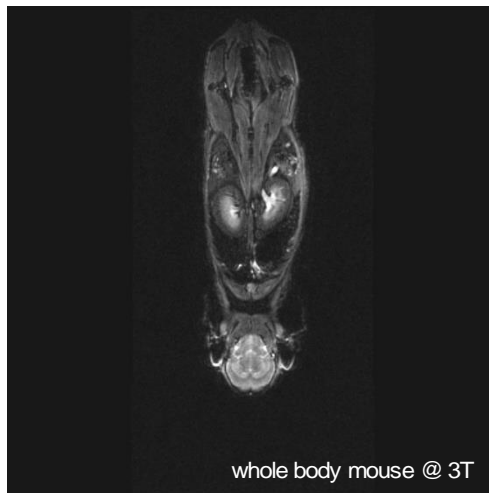


## 8 Channel Volumetric Mouse Array \*

### MR Coils Made-to-Measure

Most MRI studies start with an overview image. After this, a particular region is covered in detail. These two tasks are typically achieved with two separate coils. The RAPID Biomedical 8 channel volumetric mouse array migrates both tasks into one coil.



- 8 channel whole mouse body array
- 2 x 4 coil elements on inner tube
- receive only, actively decoupled
- integrated preamplifiers
- covering a FoV of 8 cm length
- coil elements can be activated individually
- supporting parallel imaging methods such as SENSE or GRAPPA
- actively decoupled volume transmit coil (on clinical MR systems: body coil) needed for operation
- multi-channel MR system needed for operation
- animal support with integrated anaesthesia mask and bite bar included

## Specifications

$B_0$ -field strength	1.5 and 3 T
dimensions	inner / outer diameter: 35 / 119 mm array length: 80 mm
weight	1.2 kg